

WFW ADVISES NEXTWIND ON STRATEGIC ACQUISITION OF ONSHORE WIND FARM PORTFOLIO

20 DECEMBER 2023 • PRESS



Watson Farley & Williams (“WFW”) has advised NeXtWind Capital Ltd (“NeXtWind”) on its strategic acquisition of an onshore wind portfolio comprising ten wind farms with more than 60 wind turbines and a total capacity of more than 112 MW from Qualitas Energy Deutschland GmbH. The wind farms are currently being repowered, which is expected to increase their total capacity to more than 300 MW. The transaction doubles NeXtWind’s total renewables portfolio at one stroke.

The acquisition is NeXtWind’s first major deal with its new partners Sandbrook Capital and Canadian institutional investors Public Sector Pension Investment Board (PSP Investments) and IMCO. Founded in 2020, NeXtWind is a fast-growing wind energy company that is systematically expanding and repowering its portfolio of 21 wind farms with more than 150 wind turbines, including this latest acquisition. After repowering, its overall portfolio will have a capacity potential of 750 MW+, enabling the company to supply up to 400,000 households with green energy and save over one million tons of CO2 annually.

The multidisciplinary WFW team that advised NeXtWind was led by Hamburg Corporate Partner Dr Wolfram Böge, supported by Managing Associate Christian Schindler and Associate Marian Henkes (both Corporate/M&A) as well as Managing Associate Eva Reiter, Associates Julian Kasper and Daniel Schaub Hernandez and Felix Wörner (all Corporate/M&A). Partner Dr Maximilian Boemke advised on regulatory matters with the support of Senior Associate Dr Eva-Maria Christiansen and Associates Lara-Katharina Burandt and Marina Scharfenberg, whilst Partner Dr Sebastian Baum and Managing Associates Annkathrin Hoffmann, Senior Associate Julia von der Blumensaat as well as Transaction Lawyers Tetiana Arkhipova and Stefanie Igl covered aspects of real estate law. Finance Partners Thomas Hollenhorst and Florian Kutzbach contributed with the support from Senior Associate Roman Schneider and Associate Stefan Riedmeyer. Partner Dr Christine Bader advised on Merger Control/FDI matters and Partner Verena Scheibe and Senior Associate Manuel Rustler on tax law.

Wolfram commented: “We are proud to have advised our long-standing client NeXtWind on this strategic deal. The assignment once again underlines our outstanding expertise in handling complex international transactions involving a multitude of stakeholders and legal disciplines”.

RELATED CONTACTS



DR WOLFRAM BÖGE
LL.M.

PARTNER • HAMBURG

T: +49 40 800 084 464

wboege@wfw.com



CHRISTIAN R. SCHINDLER

MANAGING ASSOCIATE
• HAMBURG

T: +49 40 800 084 346

cschindler@wfw.com



MARIAN HENKES

ASSOCIATE • HAMBURG

T: +49 40 800 084 315

mhenkes@wfw.com



JULIAN KASPER

ASSOCIATE • MUNICH

T: +49 89 237 086 128

jkasper@wfw.com



DANIEL SCHAUB

ASSOCIATE • MADRID

T: +34 91 515 63 70

dschaub@wfw.com



FELIX WÖRNER

ASSOCIATE • MUNICH

T: +49 89 237 086 101

FWoerner@wfw.com



DR F. MAXIMILIAN BOEMKE

PARTNER • HAMBURG

T: +49 40 800 084 326

mboemke@wfw.com



DR SEBASTIAN BAUM, EMLE

PARTNER • HAMBURG

T: +49 40 800 084 418

sbaum@wfw.com



JULIA VON DER BLUMENSAAT

SENIOR ASSOCIATE
• HAMBURG

T: +49 40 800 084 417

[JvonderBlumensaat@wfw.com](mailto:jvonderBlumensaat@wfw.com)



TETIANA ARKHIPOVA

TRANSACTION LAWYER
• MUNICH

T: +49 89 237 086 122

TArkhipova@wfw.com



STEFANIE IGL

TRANSACTION LAWYER
• HAMBURG

T: +49 40 800 084 364

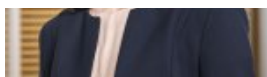


THOMAS HOLLENHORST

PARTNER • HAMBURG

T: +49 40 800 084 428

WATSON FARLEY & WILLIAMS



sigl@wfw.com



thollenhorst@wfw.com



FLORIAN KUTZBACH
PARTNER • FRANKFURT

T: +49 69 297 29 1220

fkutzbach@wfw.com



ROMAN SCHNEIDER
LL.M.
SENIOR ASSOCIATE • MUNICH

T: +49 89 237 086 167

rschneider@wfw.com



STEFAN RIEDMEYER
ASSOCIATE • MUNICH

T: + 49 89 237 086 124

sriedmeyer@wfw.com



DR CHRISTINE BADER
PARTNER • HAMBURG

T: +49 40 800 084 458

cbader@wfw.com



VERENA SCHEIBE
PARTNER • GERMANY

T: HAMBURG: +49 40 800
084 416 / MUNICH: +49 89
237 08 60

vscheibe@wfw.com



MANUEL RUSTLER
SENIOR ASSOCIATE
• FRANKFURT

T: +49 69 297 291 213

MRustler@wfw.com

MEDIA ENQUIRIES



WILL SALOMONE

T: +44 20 3036 9847

media@wfw.com

DISCLAIMER

Watson Farley & Williams is a sector specialist international law firm with a focus on the energy, infrastructure and transport sectors. With offices in Athens, Bangkok, Dubai, Dusseldorf, Frankfurt, Hamburg, Hanoi, Hong Kong, London, Madrid, Milan, Munich, New York, Paris, Rome, Seoul, Singapore, Sydney and Tokyo our 700+ lawyers work as integrated teams to provide practical, commercially focussed advice to our clients around the world.

All references to 'Watson Farley & Williams', 'WFW' and 'the firm' in this document mean Watson Farley & Williams LLP and/or its affiliated entities. Any reference to a 'partner' means a member of Watson Farley & Williams LLP, or a member, partner, employee or consultant with equivalent standing and qualification in WFW Affiliated Entities. A list of members of Watson Farley & Williams LLP and their professional qualifications is open to inspection on request.

Watson Farley & Williams LLP is a limited liability partnership registered in England and Wales with registered number OC312252. It is authorised and regulated by the Solicitors Regulation Authority and its members are solicitors or registered foreign lawyers.

WATSON FARLEY & WILLIAMS

The information provided in this publication (the “Information”) is for general and illustrative purposes only and it is not intended to provide advice whether that advice is financial, legal, accounting, tax or any other type of advice, and should not be relied upon in that regard. While every reasonable effort is made to ensure that the Information provided is accurate at the time of publication, no representation or warranty, express or implied, is made as to the accuracy, timeliness, completeness, validity or currency of the Information and WFW assume no responsibility to you or any third party for the consequences of any errors or omissions. To the maximum extent permitted by law, WFW shall not be liable for indirect or consequential loss or damage, including without limitation any loss or damage whatsoever arising from any use of this publication or the Information.

This publication constitutes attorney advertising.