

WFW ADVISES CRÉDIT AGRICOLE CARISPEZIA ON FINANCING FOR RIMORCHIATORI RIUNITI

15 MARCH 2017 • PRESS



International law firm Watson Farley & Williams (“WFW”) advised Crédit Agricole Carispezia on a new loan granted to Rimorchiatori Riuniti Porto di Genova S.r.l., a company fully controlled by Rimorchiatori Riuniti S.p.A., to finance the acquisition of the “Malta” tugboat and on the amendments to two existing financings granted in connection with the acquisition of the “Norvegia” and “Messico” tugboats, for a total amount of €15m. Crédit Agricole Cariparma S.p.A. is the Italian subsidiary of French banking group Crédit Agricole.

Leading international maritime group Genoese Rimorchiatori Riuniti S.p.A. is active across the shipping spectrum (tankers, bulk carriers and boxships), with its core business deriving from port and offshore towage services.

The WFW Italy maritime team advising Crédit Agricole Carispezia was led by Partner Furio Samela, assisted by Senior Associate Michele Autuori and Associates Emanuele Caretti and Antonella Barbarito.

RELATED CONTACTS



FURIO SAMELA
PARTNER • ITALY

T: +39 02 721 7071
M: +39 338 3986 136

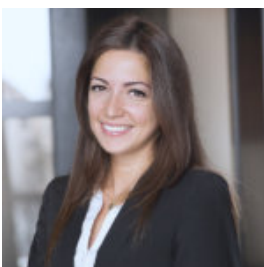
fsamela@wfw.com



MICHELE AUTUORI
PARTNER • ROME

T: +39 06 6840 581
M: +39 340 69379 69

mautuori@wfw.com



ANTONELLA BARBARITO
SENIOR ASSOCIATE • ROME

T: +39 06 68 40 581
M: +39 342 14 59 663

abarbarito@wfw.com

MEDIA ENQUIRIES



WILL SALOMONE

T: +44 20 3036 9847

media@wfw.com

DISCLAIMER

Watson Farley & Williams is a sector specialist international law firm with a focus on the energy, infrastructure and transport sectors. With offices in Athens, Bangkok, Dubai, Dusseldorf, Frankfurt, Hamburg, Hanoi, Hong Kong, London, Madrid, Milan, Munich, New York, Paris, Rome, Seoul, Singapore, Sydney and Tokyo our 700+ lawyers work as integrated teams to provide practical, commercially focussed advice to our clients around the world.

All references to 'Watson Farley & Williams', 'WFW' and 'the firm' in this document mean Watson Farley & Williams LLP and/or its affiliated entities. Any reference to a 'partner' means a member of Watson Farley & Williams LLP, or a member, partner, employee or consultant with equivalent standing and qualification in WFW Affiliated Entities. A list of members of Watson Farley & Williams LLP and their professional qualifications is open to inspection on request.

Watson Farley & Williams LLP is a limited liability partnership registered in England and Wales with registered number OC312252. It is authorised and regulated by the Solicitors Regulation Authority and its members are solicitors or registered foreign lawyers.

The information provided in this publication (the "Information") is for general and illustrative purposes only and it is not intended to provide advice whether that advice is financial, legal, accounting, tax or any other type of advice, and should not be relied upon in that regard. While every reasonable effort is made to ensure that the Information provided is accurate at the time of publication, no representation or warranty, express or implied, is made as to the accuracy, timeliness, completeness, validity or currency of the Information and WFW assume no responsibility to you or any third party for the consequences of any errors or omissions. To the maximum extent permitted by law, WFW shall not be liable for indirect or consequential loss or damage, including without limitation any loss or damage whatsoever arising from any use of this publication or the Information.

This publication constitutes attorney advertising.