

## WFW ADVISES CRÉDIT AGRICOLE ON FRATELLI NERI FINANCING

2 APRIL 2020 • PRESS



**Watson Farley & Williams (“WFW”) advised Crédit Agricole Italia S.p.A. on a loan facility to Fratelli Neri S.p.A., to finance the construction of the “ROMITO” tugboat built at Damen Shipyards in the Netherlands.**

The financing has been fully disbursed to cover the payments agreed with the Dutch yard.

Crédit Agricole Italia S.p.A., a subsidiary of international French banking group Crédit Agricole, is active across eleven Italian regions through its commercial banking arm.

Fratelli Neri, which is part of the Neri Group and provides harbour towage and related maritime services, has been owned and operated by Livorno’s Neri family since the 18th Century. The new unit will join its fleet of 40+ vessels, including harbour, LNG terminal, oil terminal tugs, salvage, coastal and deep-sea towage tugs.

The WFW Italy Maritime team advising Crédit Agricole Italia S.p.A. was led by Partner Furio Samela, working closely with Senior Associate Michele Autuori, and assisted by Associates Antonella Barbarito and Beatrice D’Amato.

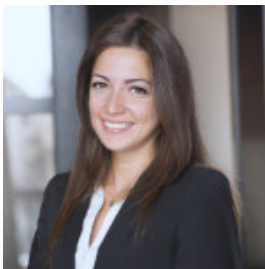
## RELATED CONTACTS

**FURIO SAMELA**

PARTNER • ITALY

T: +39 02 721 7071  
M: +39 338 3986 136[fsamela@wfw.com](mailto:fsamela@wfw.com)**MICHELE AUTUORI**

PARTNER • ROME

T: +39 06 6840 581  
M: +39 340 69379 69[mautuori@wfw.com](mailto:mautuori@wfw.com)**ANTONELLA BARBARITO**

SENIOR ASSOCIATE • ROME

T: +39 06 68 40 581  
M: +39 342 14 59 663[abarbarito@wfw.com](mailto:abarbarito@wfw.com)**BEATRICE D'AMATO**

ASSOCIATE • ROME

T: +39 06 68 40 581  
M: +39 3343058985[bdamato@wfw.com](mailto:bdamato@wfw.com)

## MEDIA ENQUIRIES

**WILL SALOMONE**

T: +44 20 3036 9847

[media@wfw.com](mailto:media@wfw.com)

### DISCLAIMER

Watson Farley & Williams is a sector specialist international law firm with a focus on the energy, infrastructure and transport sectors. With offices in Athens, Bangkok, Dubai, Dusseldorf, Frankfurt, Hamburg, Hanoi, Hong Kong, London, Madrid, Milan, Munich, New York, Paris, Rome, Seoul, Singapore, Sydney and Tokyo our 700+ lawyers work as integrated teams to provide practical, commercially focussed advice to our clients around the world.

All references to 'Watson Farley & Williams', 'WFW' and 'the firm' in this document mean Watson Farley & Williams LLP and/or its affiliated entities. Any reference to a 'partner' means a member of Watson Farley & Williams LLP, or a member, partner, employee or consultant with equivalent standing and qualification in WFW Affiliated Entities. A list of members of Watson Farley & Williams LLP and their professional qualifications is open to inspection on request.

Watson Farley & Williams LLP is a limited liability partnership registered in England and Wales with registered number OC312252. It is authorised and regulated by the Solicitors Regulation Authority and its members are solicitors or registered foreign lawyers.

The information provided in this publication (the "Information") is for general and illustrative purposes only and it is not intended to provide advice whether that advice is financial, legal, accounting, tax or any other type of advice, and should not be relied upon in that regard. While every reasonable effort is made to ensure that the Information provided is accurate at the time of publication, no representation or warranty, express or implied, is made as to the accuracy, timeliness, completeness, validity or currency of the Information and WFW assume no responsibility to you or any third party for the consequences of any errors or omissions. To the maximum extent permitted by law, WFW shall not be liable for indirect or consequential loss or damage, including without limitation any loss or damage whatsoever arising from any use of this publication or the Information.

This publication constitutes attorney advertising.