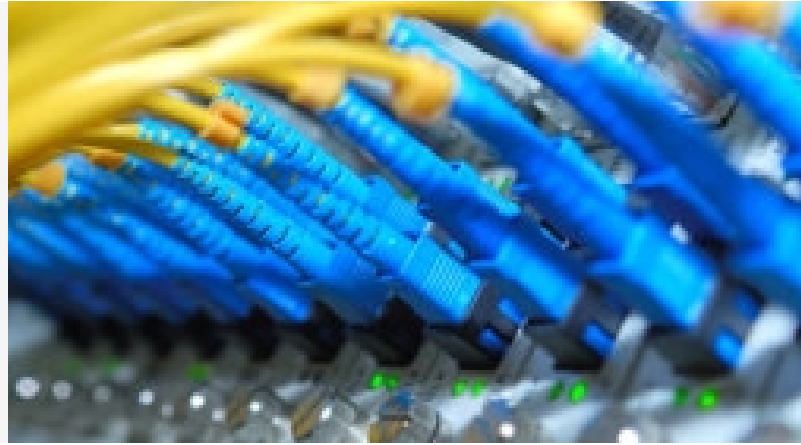


WFW ADVISES COSMOTE ON €300M EIB AND EBRD FINANCING

4 AUGUST 2017 • PRESS



International law firm Watson Farley & Williams (“WFW”) advised Cosmote S.A. (“Cosmote”), a 100% subsidiary of OTE S.A. (“OTE”), on a €300m loan financing package provided by the European Investment Bank (“EIB”) and the European Bank for Reconstruction and Development (“EBRD”).

Cosmote signed a €150m bilateral term loan with EIB provided under the European Fund for Strategic Investments and an agreement with EBRD to raise a further €150m via a syndicated facility, in which domestic and international banks can participate. OTE acted as guarantor for both facilities. The funds will be used to provide additional liquidity for Cosmote’s mobile broadband network coverage and capacity expansion investments in Greece.

The WFW Athens Finance team advising Cosmote was led by Partner Nikolaos Kostikas, supported by Partner Alexandros Damianidis, Senior Associate Christina Giagka and Associate Eirini Portokalaki.

Nikolaos commented: “We are delighted to have advised Cosmote on this major and innovative financing transaction which will support OTE Group in its effort to accomplish its investment plan”.

RELATED CONTACTS



NIKOLAOS KOSTIKAS
PARTNER • ATHENS

T: +30 210 455 7338

nkostikas@wfw.com



ALEXANDROS DAMIANIDIS
PARTNER • ATHENS

T: +30 210 455 7315

adamianidis@wfw.com

MEDIA ENQUIRIES



WILL SALOMONE

T: +44 20 3036 9847

media@wfw.com

DISCLAIMER

Watson Farley & Williams is a sector specialist international law firm with a focus on the energy, infrastructure and transport sectors. With offices in Athens, Bangkok, Dubai, Dusseldorf, Frankfurt, Hamburg, Hanoi, Hong Kong, London, Madrid, Milan, Munich, New York, Paris, Rome, Seoul, Singapore, Sydney and Tokyo our 700+ lawyers work as integrated teams to provide practical, commercially focussed advice to our clients around the world.

All references to 'Watson Farley & Williams', 'WFW' and 'the firm' in this document mean Watson Farley & Williams LLP and/or its affiliated entities. Any reference to a 'partner' means a member of Watson Farley & Williams LLP, or a member, partner, employee or consultant with equivalent standing and qualification in WFW Affiliated Entities. A list of members of Watson Farley & Williams LLP and their professional qualifications is open to inspection on request.

Watson Farley & Williams LLP is a limited liability partnership registered in England and Wales with registered number OC312252. It is authorised and regulated by the Solicitors Regulation Authority and its members are solicitors or registered foreign lawyers.

The information provided in this publication (the "Information") is for general and illustrative purposes only and it is not intended to provide advice whether that advice is financial, legal, accounting, tax or any other type of advice, and should not be relied upon in that regard. While every reasonable effort is made to ensure that the Information provided is accurate at the time of publication, no representation or warranty, express or implied, is made as to the accuracy, timeliness, completeness, validity or currency of the Information and WFW assume no responsibility to you or any third party for the consequences of any errors or omissions. To the maximum extent permitted by law, WFW shall not be liable for indirect or consequential loss or damage, including without limitation any loss or damage whatsoever arising from any use of this publication or the Information.

This publication constitutes attorney advertising.